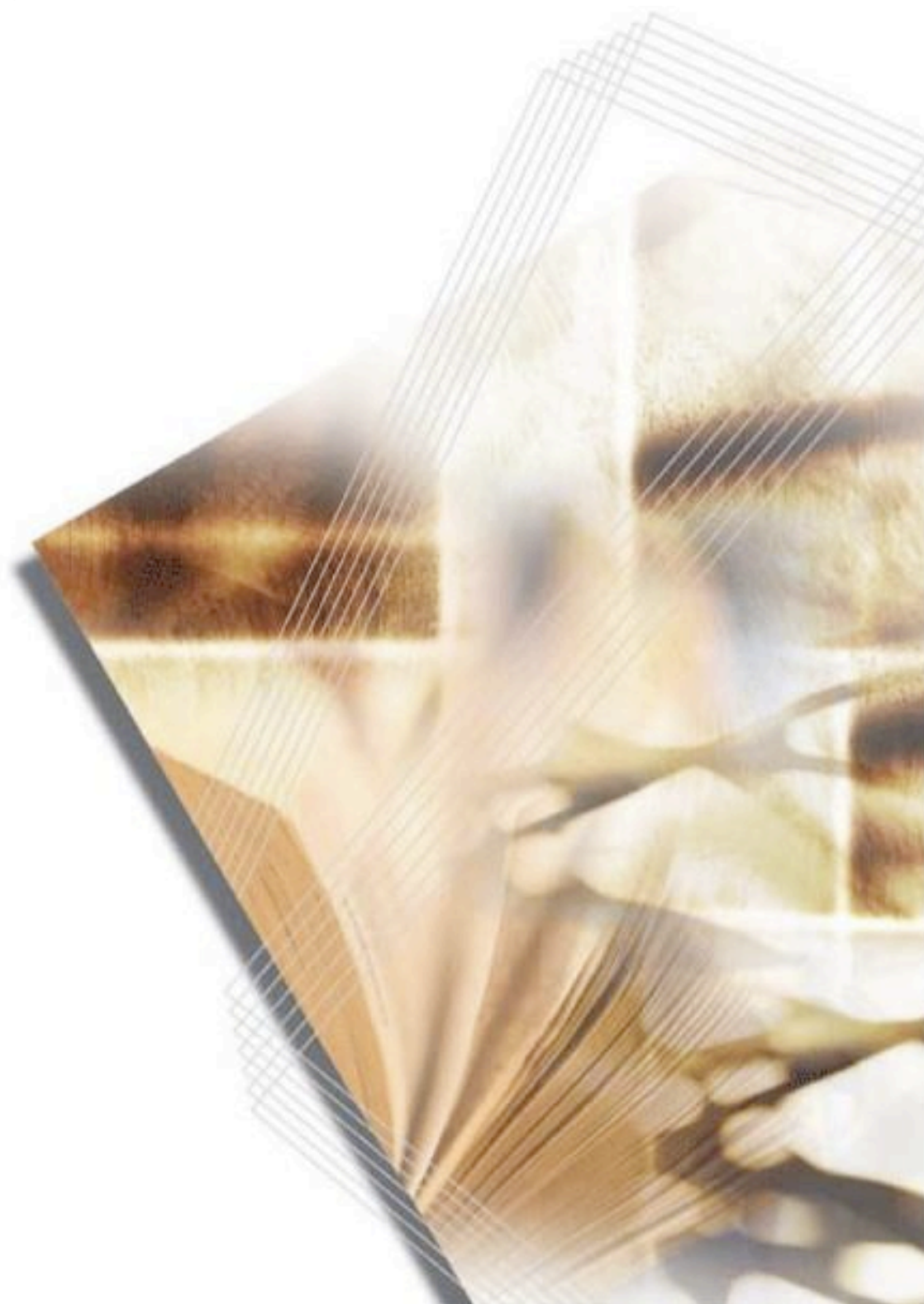


MAC DRIVER 4.0 (PDF MODE) SETUP GUIDE



Legal Notes

Unauthorized reproduction of all or part of this guide is prohibited.

The information in this guide is subject to change without notice.

We cannot be held liable for any problems arising from the use of this product, regardless of the information herein.

Regarding Trademarks

Mac, Mac OS, and Bonjour are trademarks of Apple Inc., registered in the U.S. and other countries.

Windows is a registered trademark or trademark of Microsoft Corporation in the United States and/or other countries.

Table of Contents

Chapter 1 Installation

Package Installer Setup	1-1
Adding Printers	1-4
Switching to PDF Mode	1-6
Configuring Installable Options	1-7

Chapter 2 PDL Switch Tool

PDL Switch Preference Pane	2-1
Switching between KPDL, PDF, and PCL Modes	2-2
Uninstalling the PDL Switch Tool	2-2

Chapter 3 PDF Mode Features

Print Dialog	3-1
Standard Panes for PDF Mode	3-1

Chapter 4 Print Panel Application

Printer Pane	4-1
Basic Pane	4-2
Layout Pane	4-2
Finishing Pane	4-3
Imaging Pane	4-4
Job Pane	4-5
Watermark Pane	4-6
About Dialog	4-7
Supported Print Features	4-8

Chapter 5 PDF Comparison with KPDL

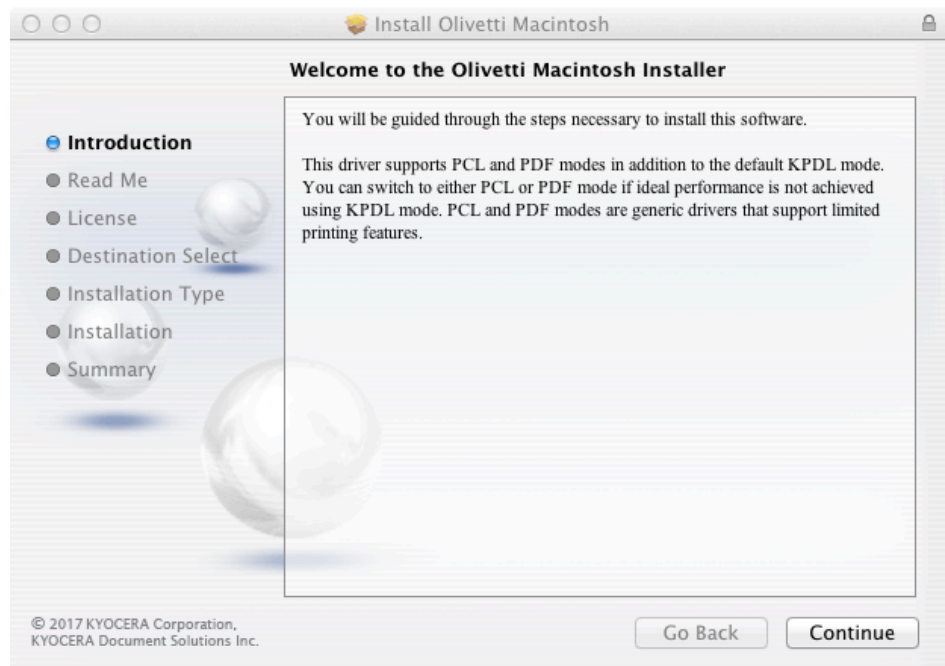
1 Installation

Mac Driver 4.0 supports Mac OS X 10.8 and later. Its PDF Mode can be installed by running the provided package installer. A user account with administrative rights is required to perform the installation. The recommended steps are described below.

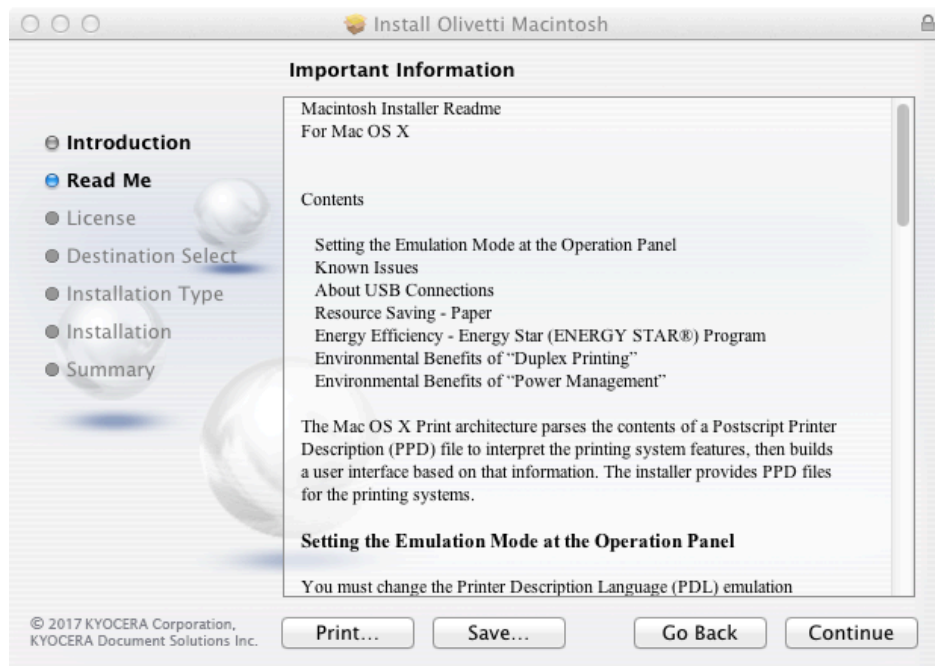
Package Installer Setup

You can install the driver using the provided package installer.

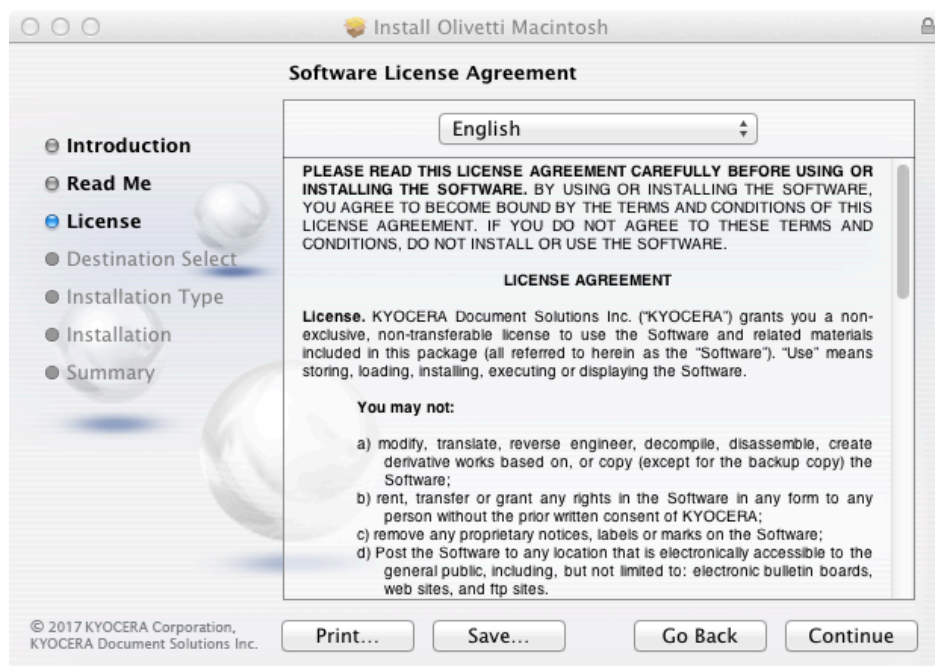
1. Double-click the **.DMG** file to run the installer.
2. In the installer dialog, click **Continue** to proceed to the Readme page.



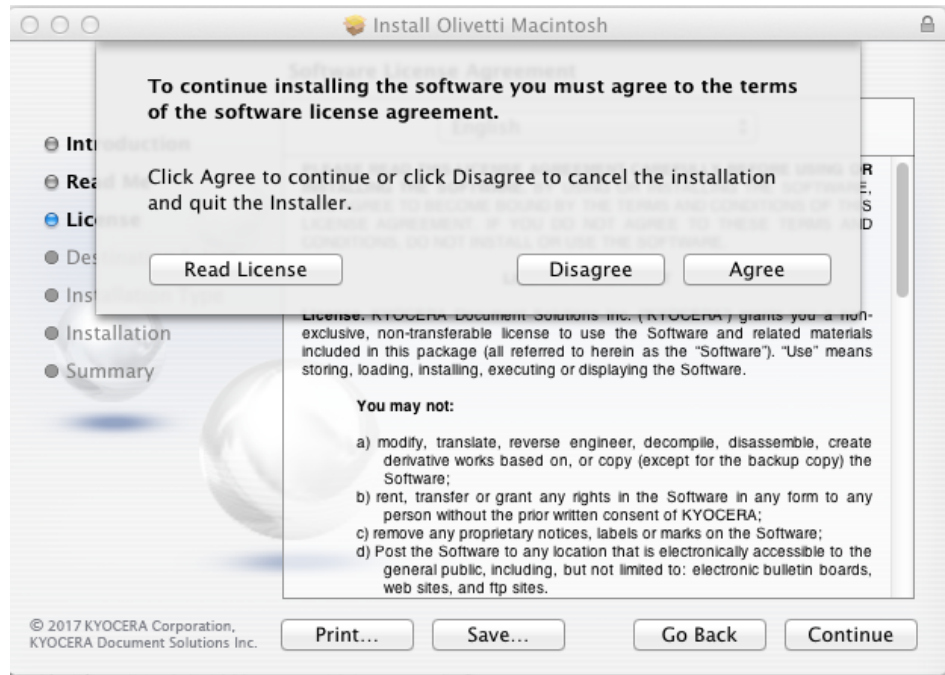
3. Click **Continue** to proceed to the license agreement page.



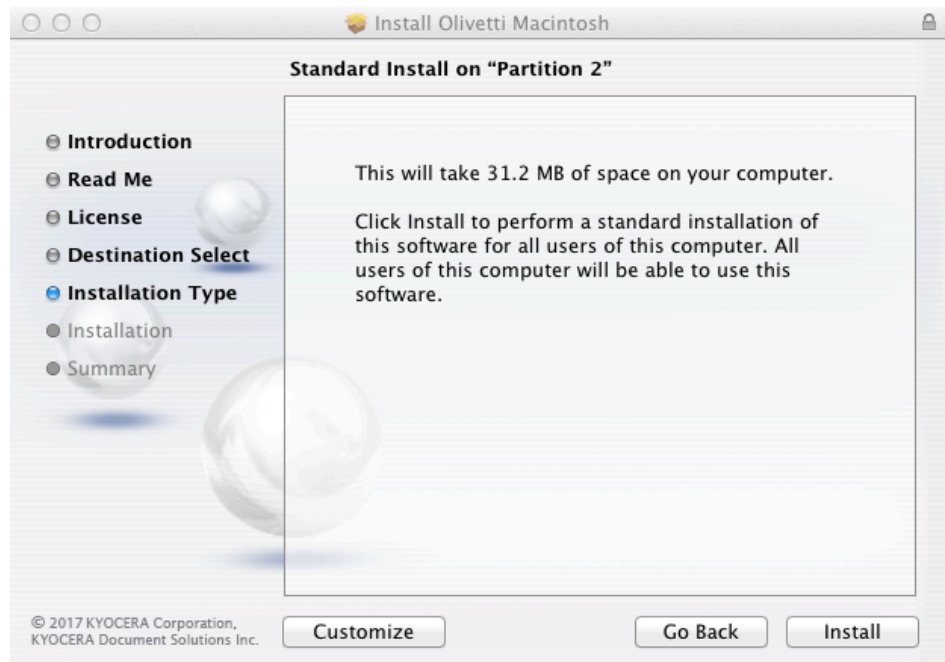
4. Review the **Software License Agreement**, and then click **Continue**.



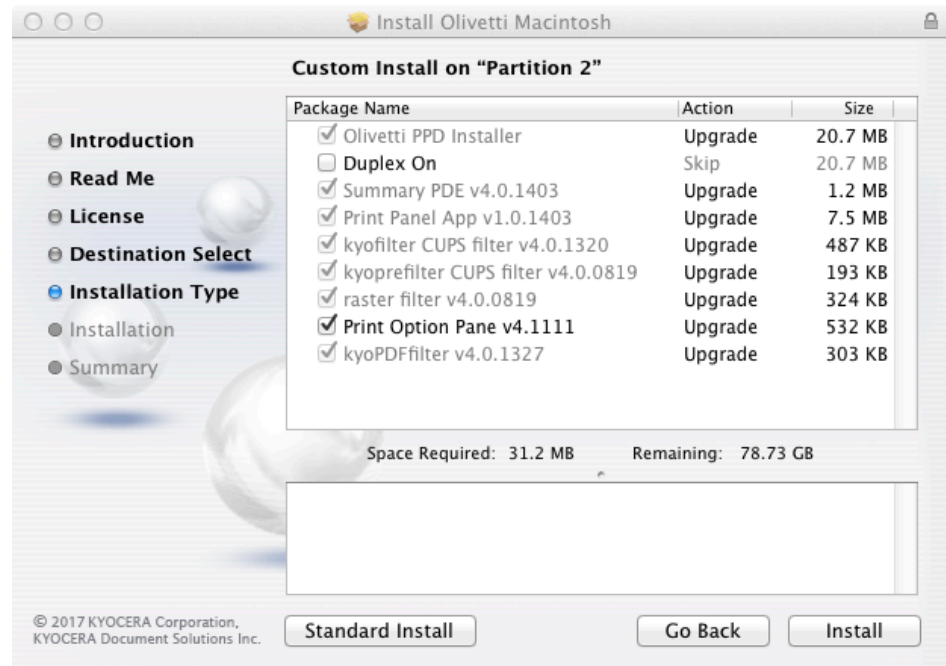
5. Click **Agree** to accept the terms of the license agreement.



6. Click **Install** and enter the admin password to complete the standard installation. Alternatively, you can select **Customize** to perform a custom installation. For custom installation, select the **Print Option Pane** checkbox to install the Print Option Pane.

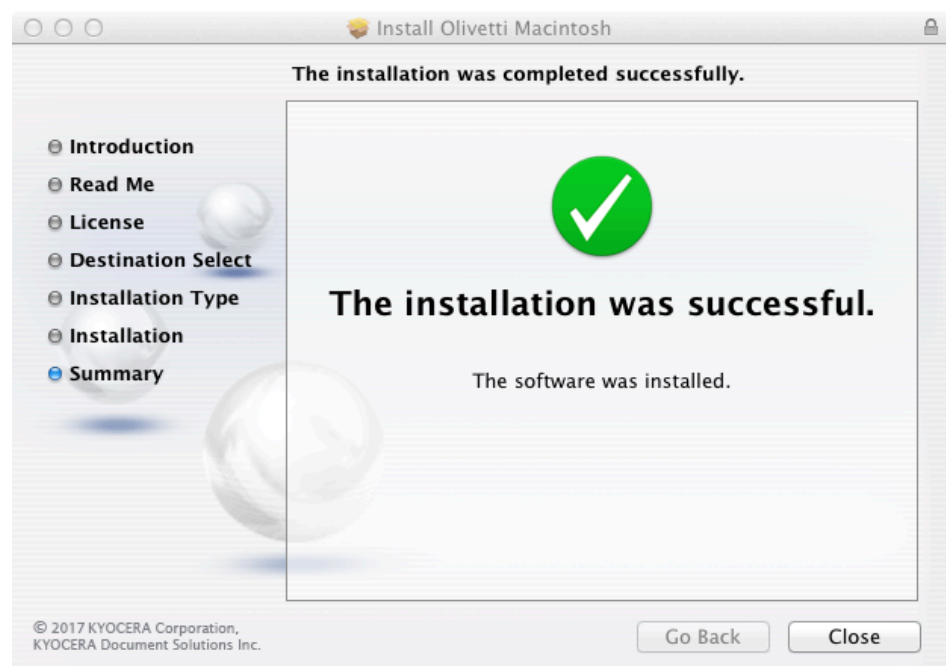


Standard Installation Page



Custom Installation Page

7. Click **Close** to exit when the installation is complete.



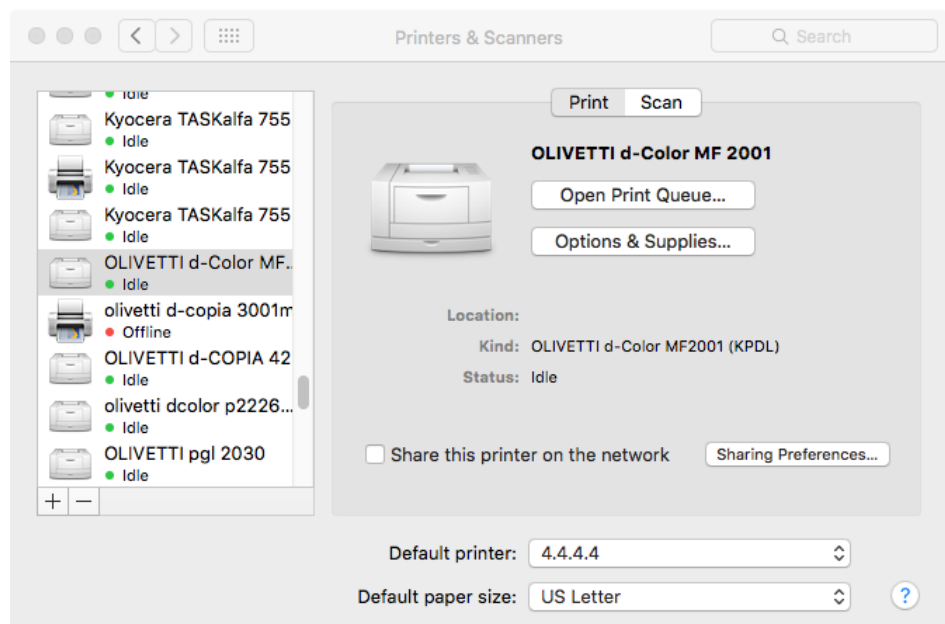
Adding Printers

After you install the driver, you can add the printers to be used on the system.

1. Open **System Preferences** and click **Print & Fax** (this may also be called **Print & Scan** or **Printers & Scanners**, depending on the Mac OS X version you are using).



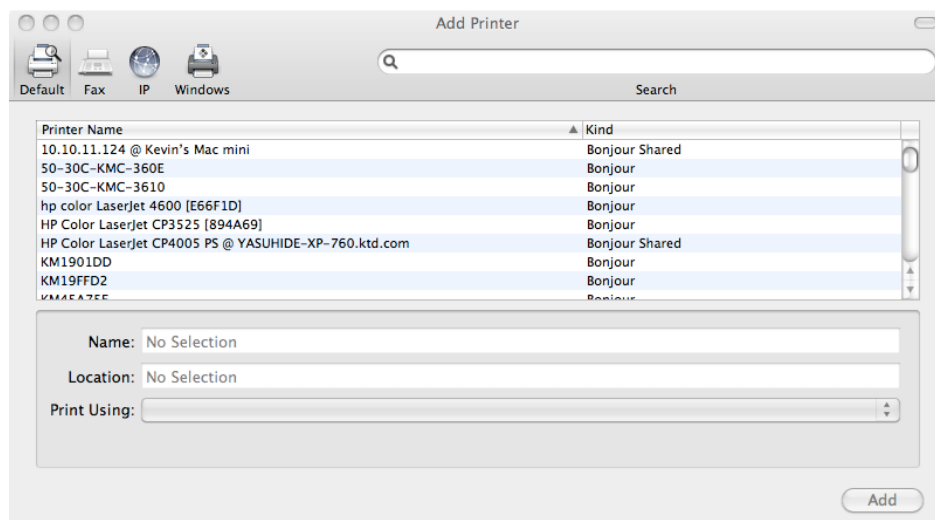
2. In the **Print & Fax** dialog, you can click the “+” icon at the bottom of the **Printers** list to open the **Add Printer** dialog (this may also be called **Add**, depending on the Mac OS X version you are using).



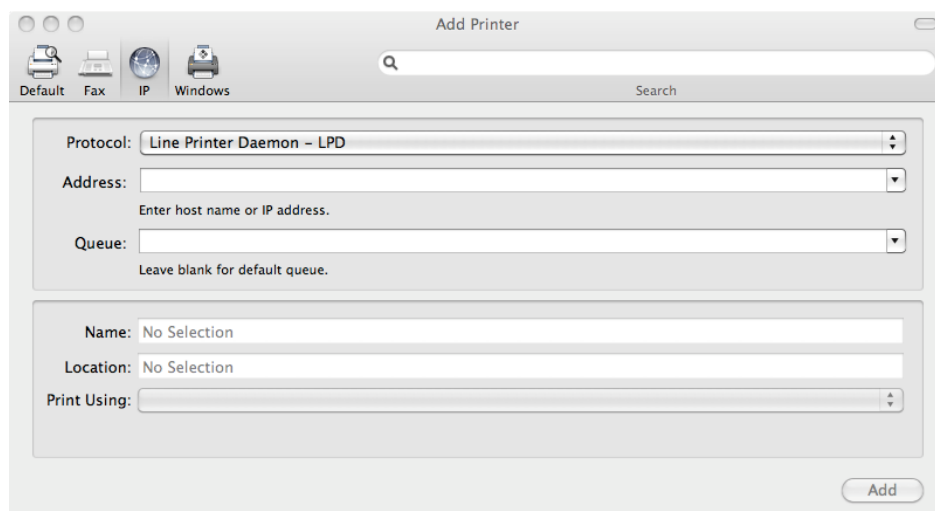
To add a printer, you must first choose a connection type—**Bonjour**, **IP Printer**, or **Windows**. If you choose the **Default** connection type, Printer Setup Utility displays a list of all available printers with Bonjour support.

When you select a printer to add to the printers list, Printer Setup Utility retrieves the selected printer’s address, icon, and model information. Printer Setup Utility then uses this information to create a new printer queue, and then adds the printer to the list when you click **Add**.

Note: On Mac OS 10.10 and later, **Secure Airprint** may be selected by default.



For better printing support, it is recommended to use **Line Printer Daemon (LPD)** for the protocol. To add an LPR printer that uses IP, enter the printer's DNS host name or IP address and then select the appropriate model from the **Print Using** menu. The matching PPD for the printer is automatically selected by the OS.

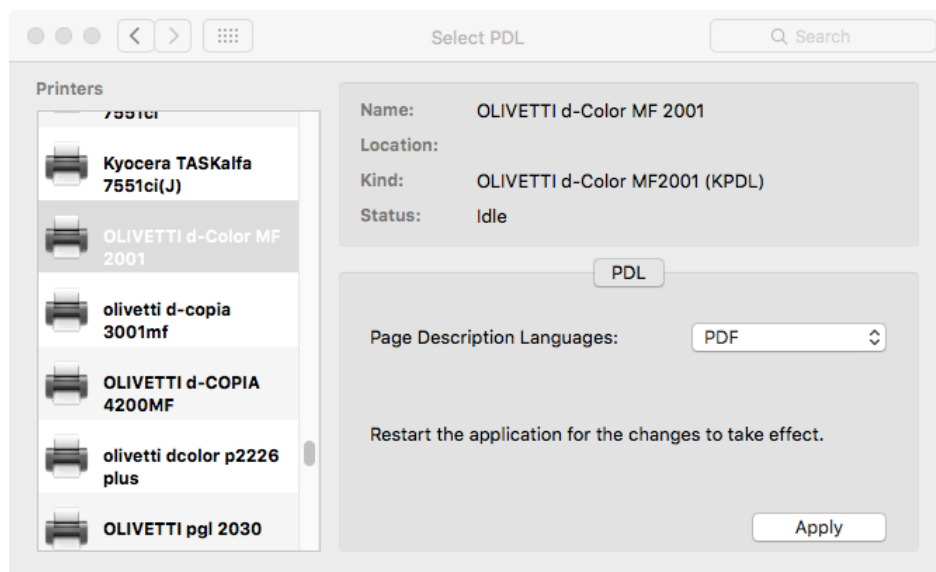


Note: Installable options must be set manually after you switch to PDF mode.

Switching to PDF Mode

After you install the driver and add at least one printer, you can switch the driver to PDF Mode.

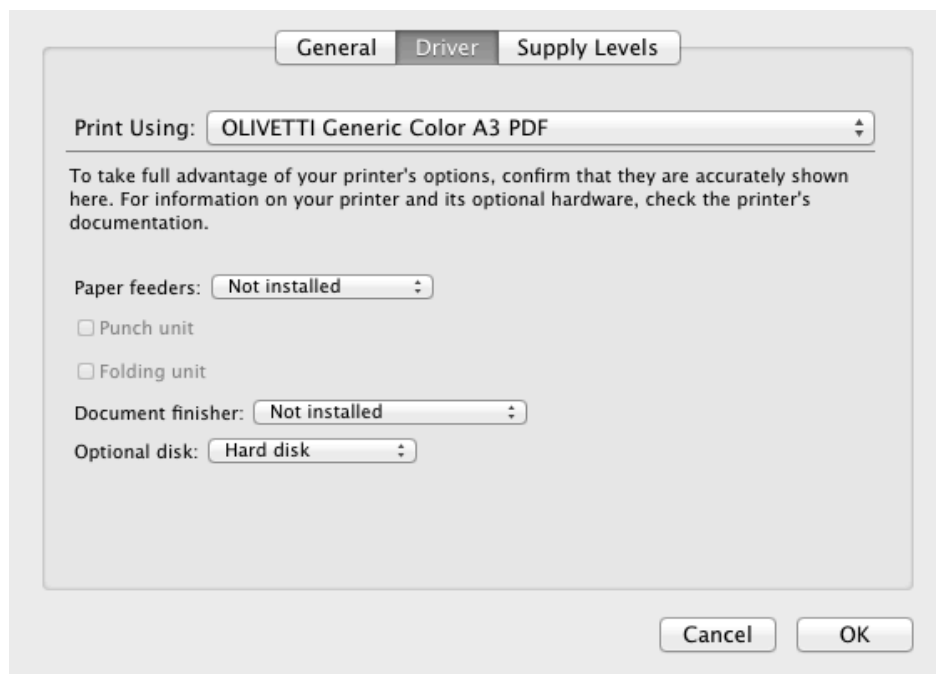
1. Open **System Preferences > Select PDL**.
2. Select a printer from the **Printers** list.
3. Select **PDF** from the **Page Description Languages** drop-down menu.
4. Click **Apply**.



Configuring Installable Options

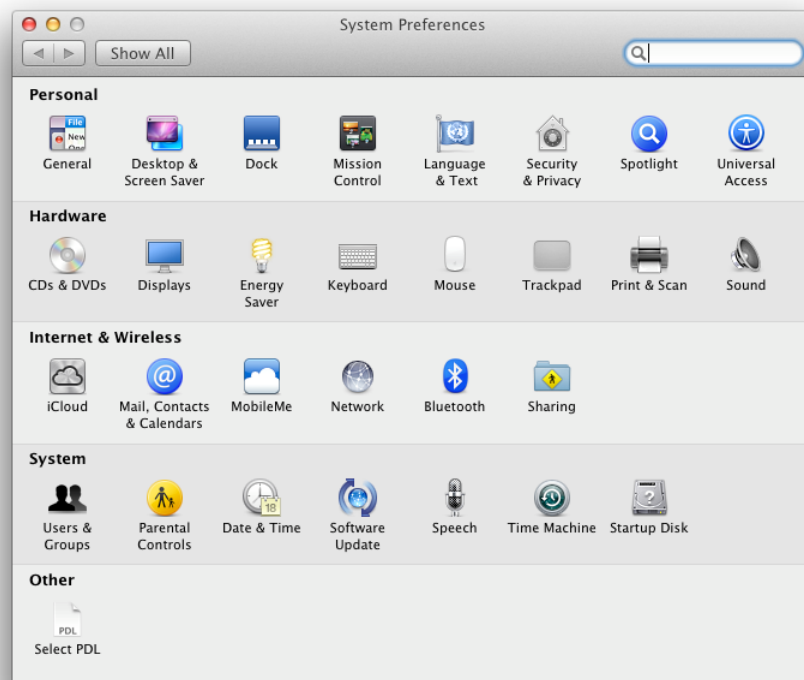
After you switch the driver to PDF mode, you can set up the installable options for the printer.

1. Click **Print & Fax** from **System Preferences**.
2. Select a printer from the **Printers** list.
3. Click **Options & Supplies**.
4. Click the **Driver** tab to modify the installable options.



2 PDL Switch Tool

Once the driver package is installed, the PDL switch tool appears in the **System Preferences** dialog under **Other** > **Select PDL**. The PDL switch tool only works with Mac Driver 4.0 and the models supported by the driver.



PDL Switch Preference Pane

The PDL Switch preference pane is made up of 3 main components: Discovery, Device Status, and PDL Control.

Discovery

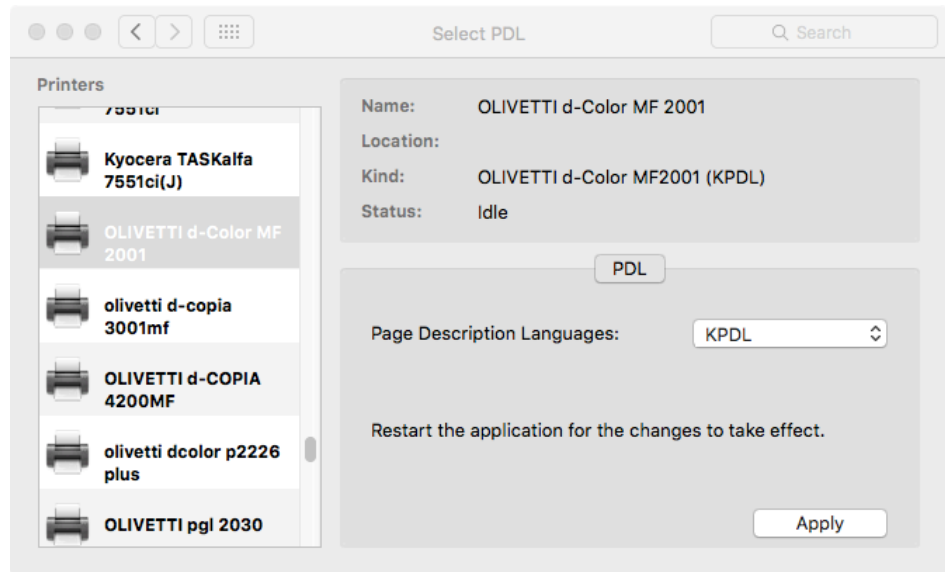
The **Printers** list displays the printers discovered by the driver. The current printer is selected.

Device Status

The upper section shows the properties of the selected printer, including its current status.

PDL Control

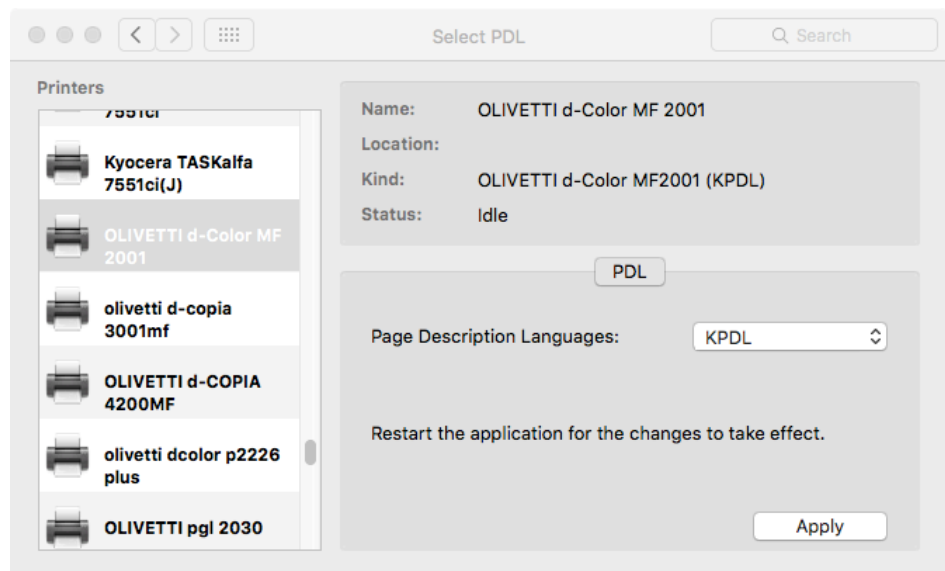
The lower section allows you to modify the PDL. After switching the PDL, all open applications need to be restarted for the changes to take effect.



Switching between KPD L, PDF, and PCL Modes

The following steps describe how to switch between KPD L, PDF, and PCL modes.

1. Open **System Preferences > Select PDL**.
2. Select a printer from the **Printers** list.
3. Select **KPD L**, **PDF**, or **PCL** from the **Page Description Languages** drop-down menu.
4. Click **Apply**.



Uninstalling the PDL Switch Tool

The PDL switch tool can be uninstalled from **System Preferences**.

1. Open **System Preferences**.
2. Right-click the **Select PDL** icon and then click **Remove "Select PDL" Preference Pane**.

3 PDF Mode Features

Print Dialog

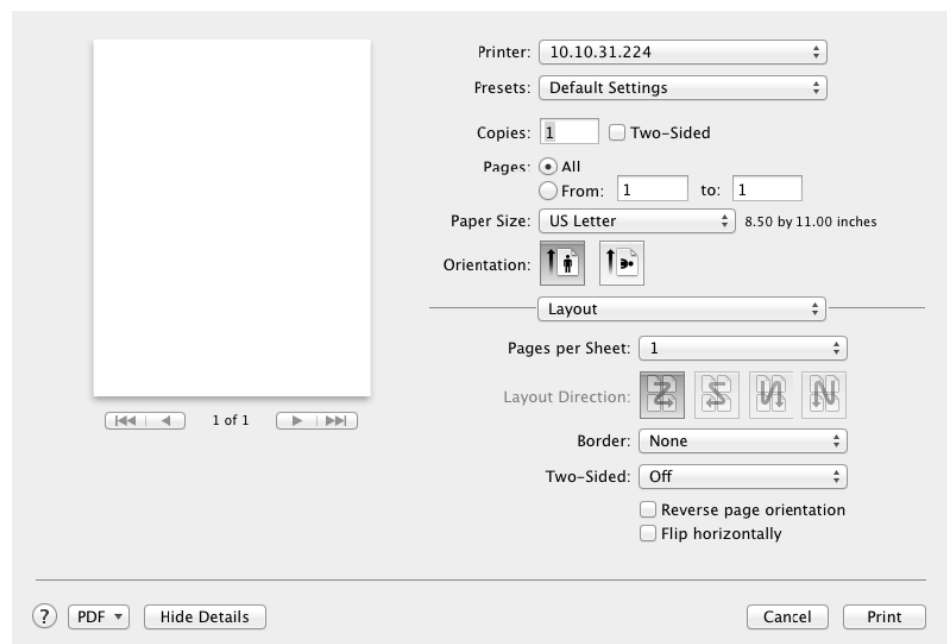
The **Print** dialog appears when you select **Print** from the **File** menu of an application. The **Print** dialog has some settings panes provided by the OS and can also be extended to allow for third-party customization.

Standard Panes for PDF Mode

The printing system uses information from the PPD file to populate many of the model-specific features in these panes located at the bottom of the **Print** dialog. Actual selections vary by OS.

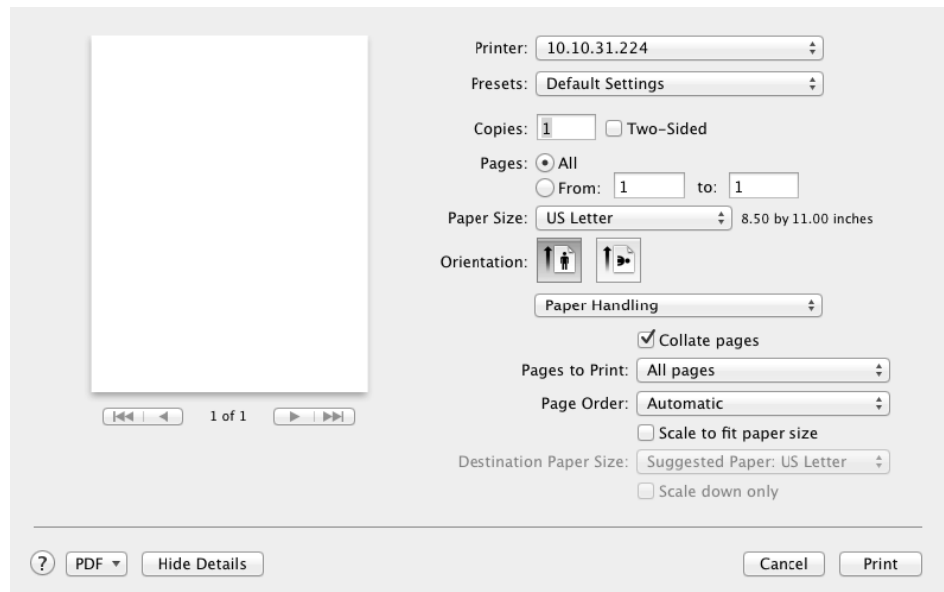
Layout Pane

The **Layout** pane provides settings for pages per sheet and duplex.



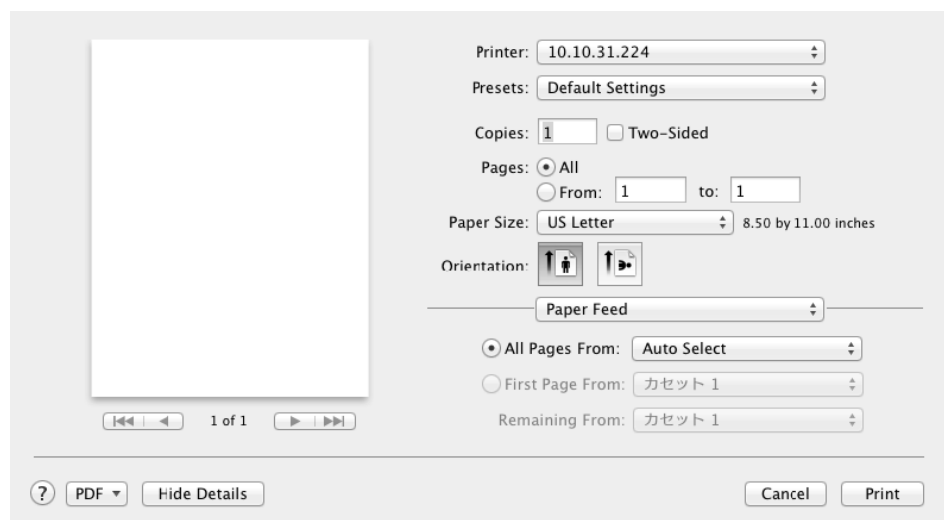
Paper Handling Pane

The **Paper Handling** pane provides settings for destination paper size after scaling.



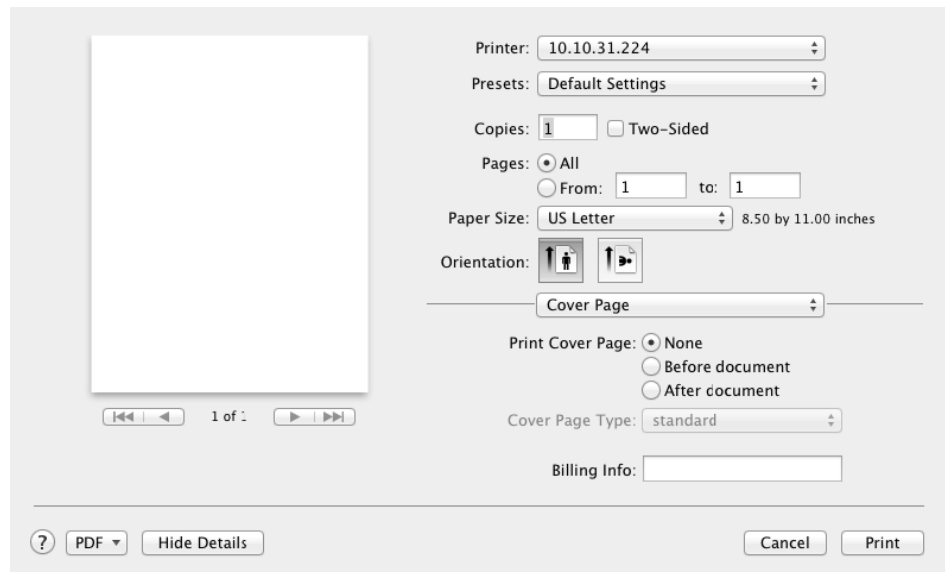
Paper Feed Pane

The **Paper Feed** pane provides settings for selecting the paper input tray.



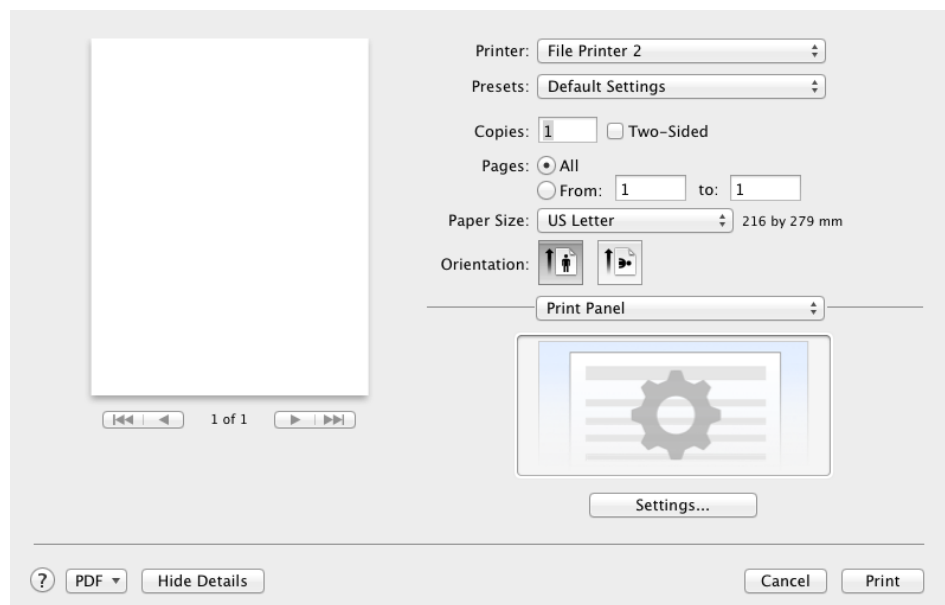
Cover Page Pane

The **Cover Page** pane provides settings for printing a cover page with predefined types and/or billing information.



Print Panel Pane

The **Print Panel** pane allows users to launch the external **Print Panel** application directly from the **Print** dialog, modify print settings, and apply the settings to the current print job.

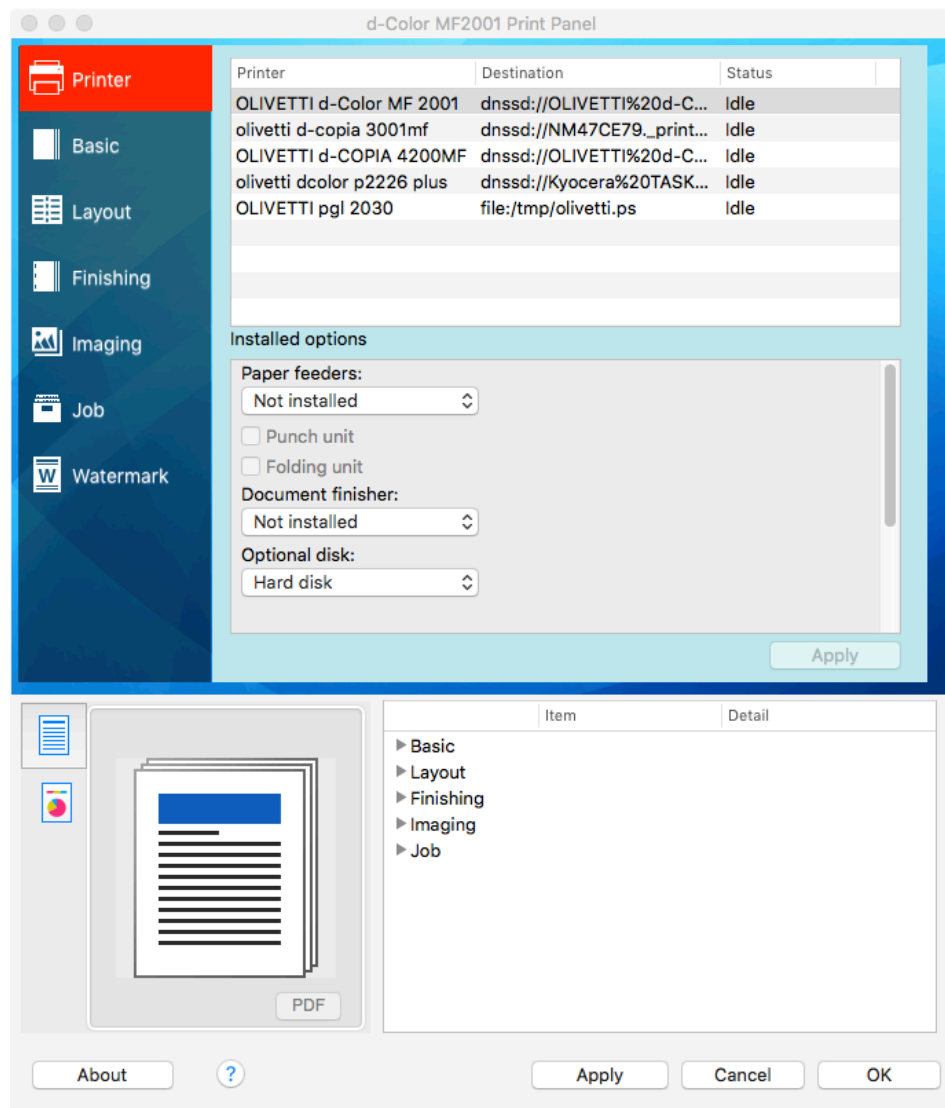


4 Print Panel Application

The **Print Panel** application is the main part of Mac Driver 4.0. Users can modify, save, and load permanent or temporary print settings. It can be launched from the **Launchpad** or from the **Print** dialog.

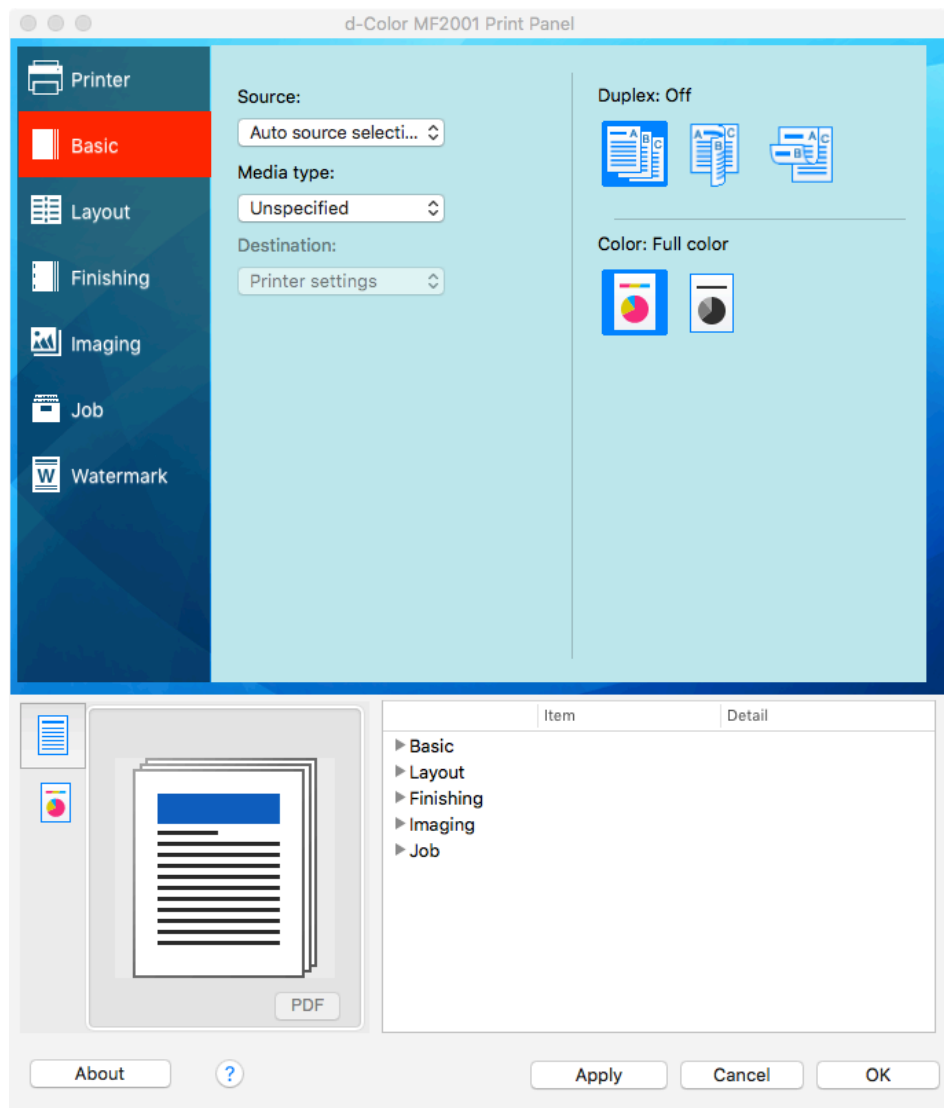
Printer Pane

The **Printer** pane displays all installed Mac Driver 4.0 printer instances. Users can use this pane to choose a printer, and change print settings and installable options. When launched from the **Print** dialog, this pane is hidden, as settings can only be set for the current printer in the **Print** dialog.



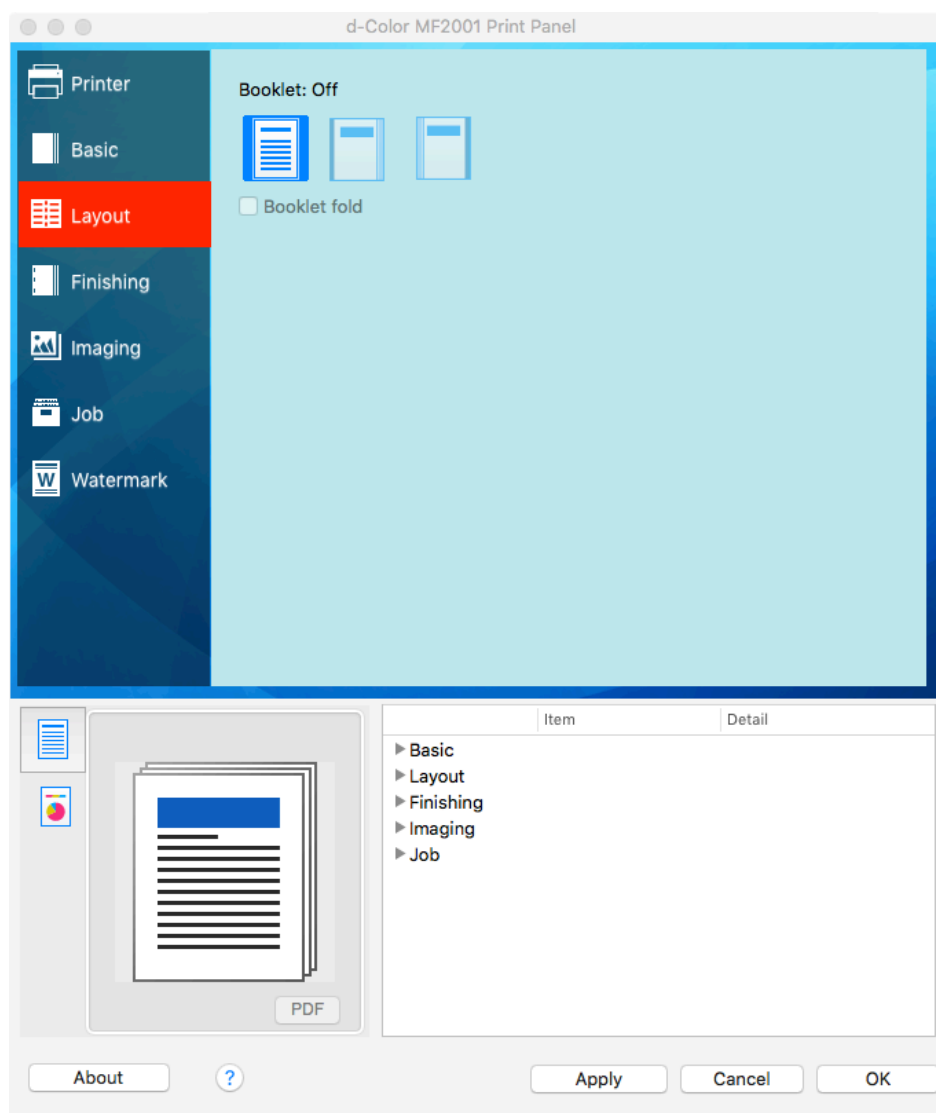
Basic Pane

The **Basic** pane contains the most commonly used features, including **Source**, **Media type**, **Duplex**, and **Color**.



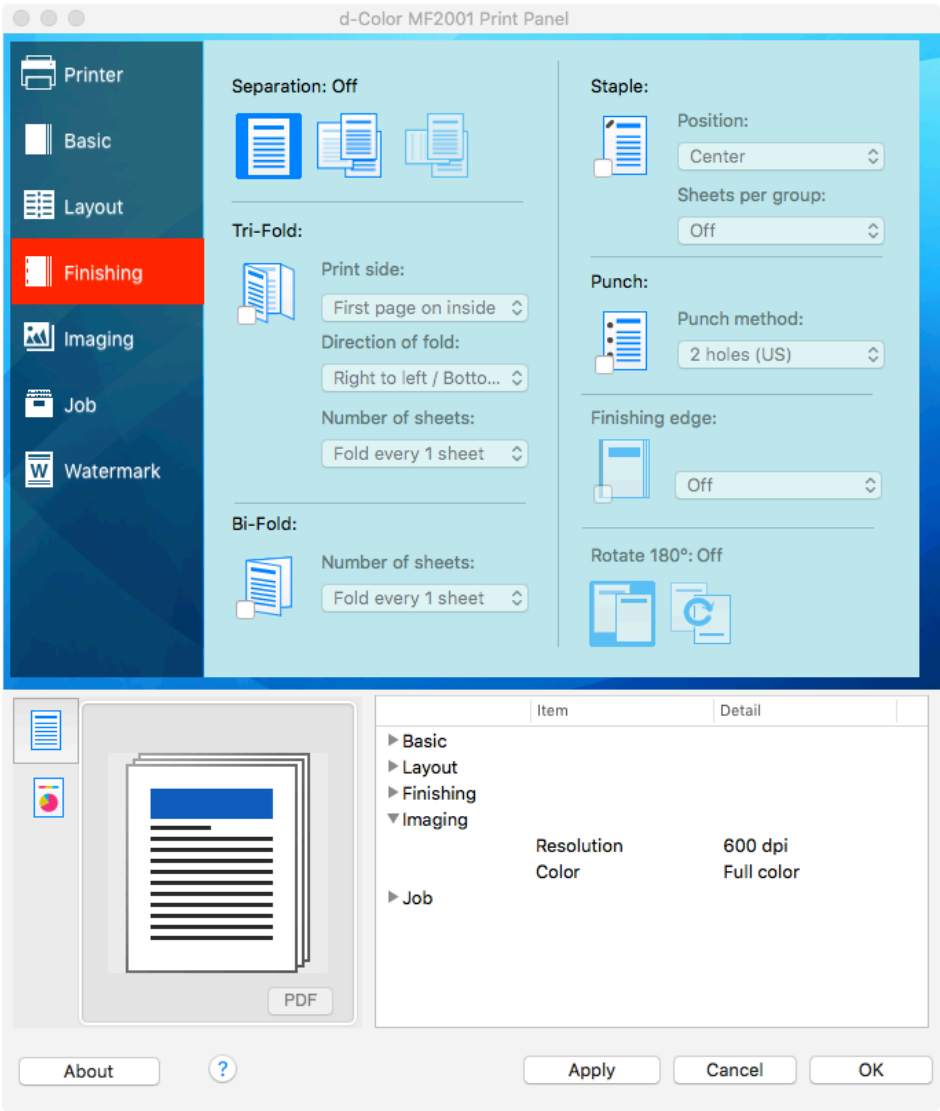
Layout Pane

The **Layout** pane contains **Booklet**.



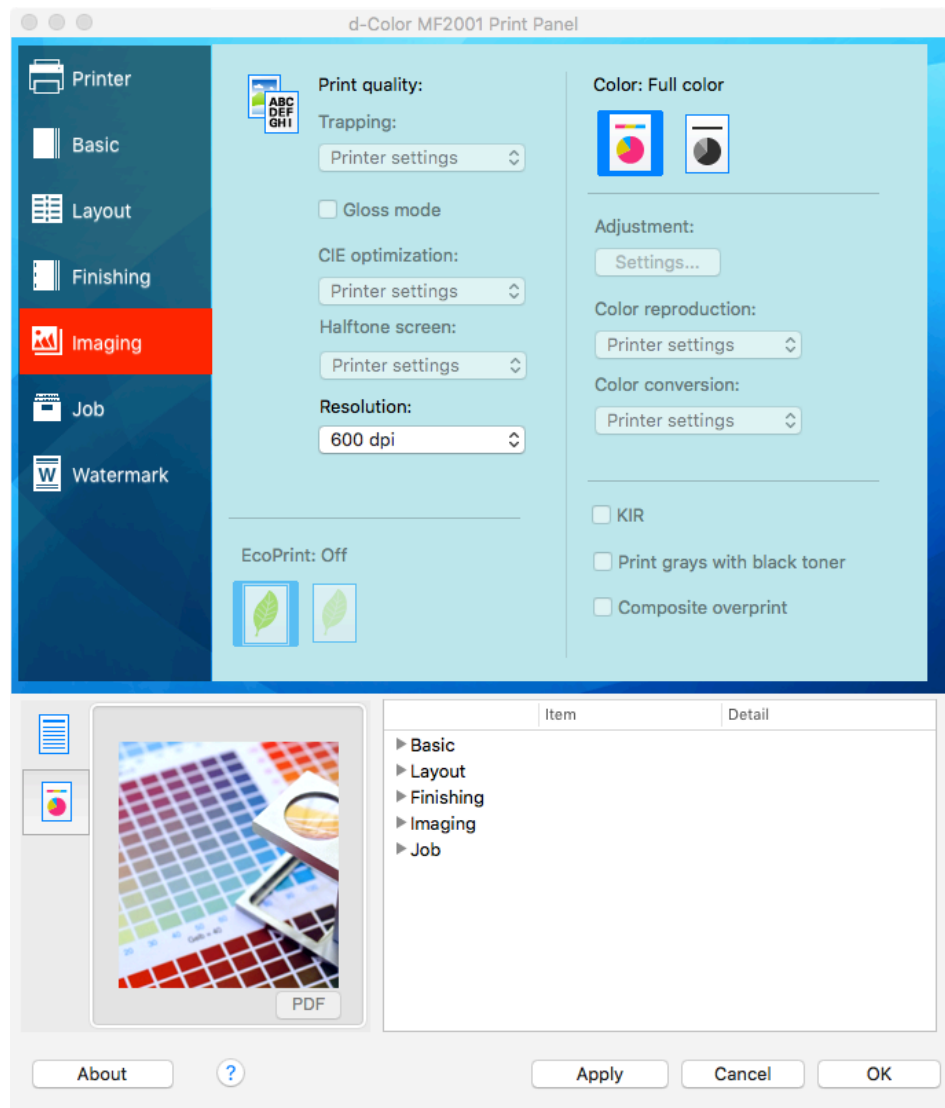
Finishing Pane

The **Finishing** pane supports **Separation**, **Staple**, **Punch**, and **Tri-Fold/Bi-Fold**.



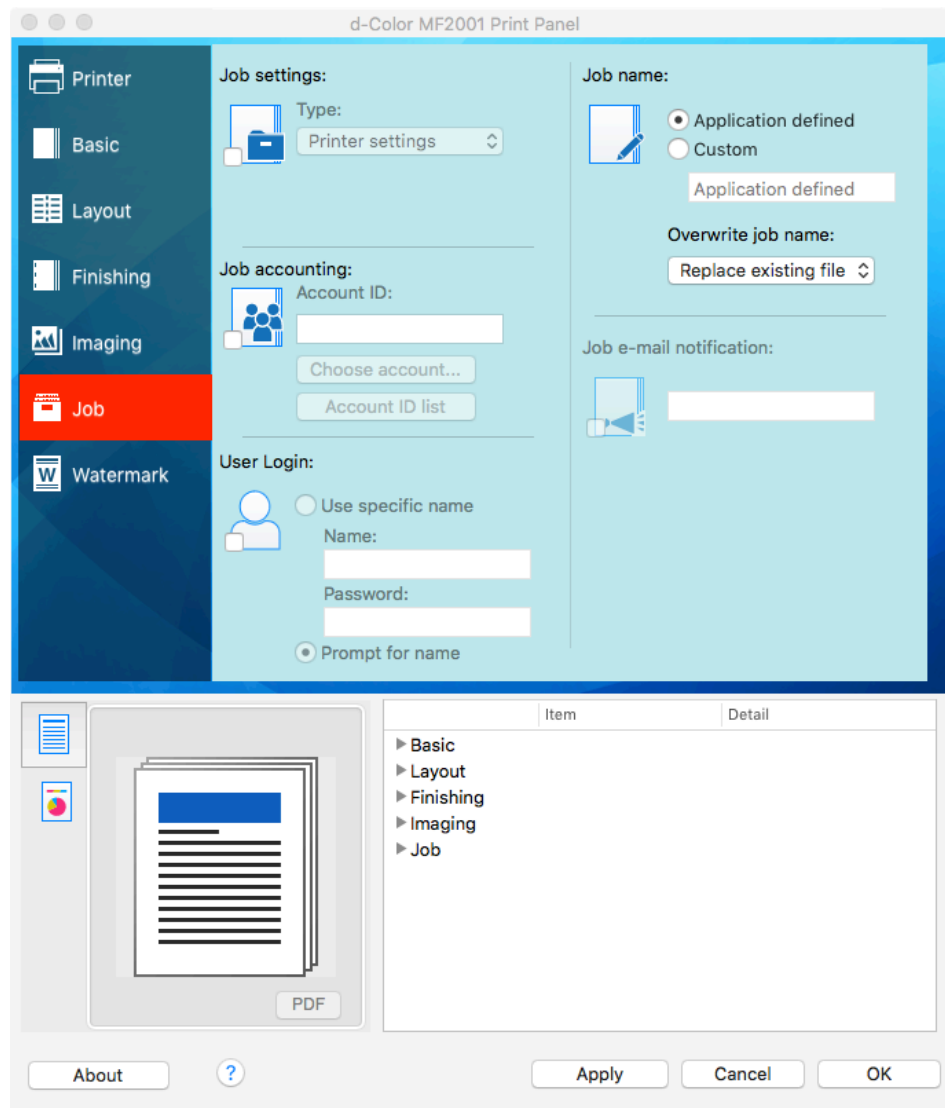
Imaging Pane

The **Imaging** pane allows users to set color mode and resolution.



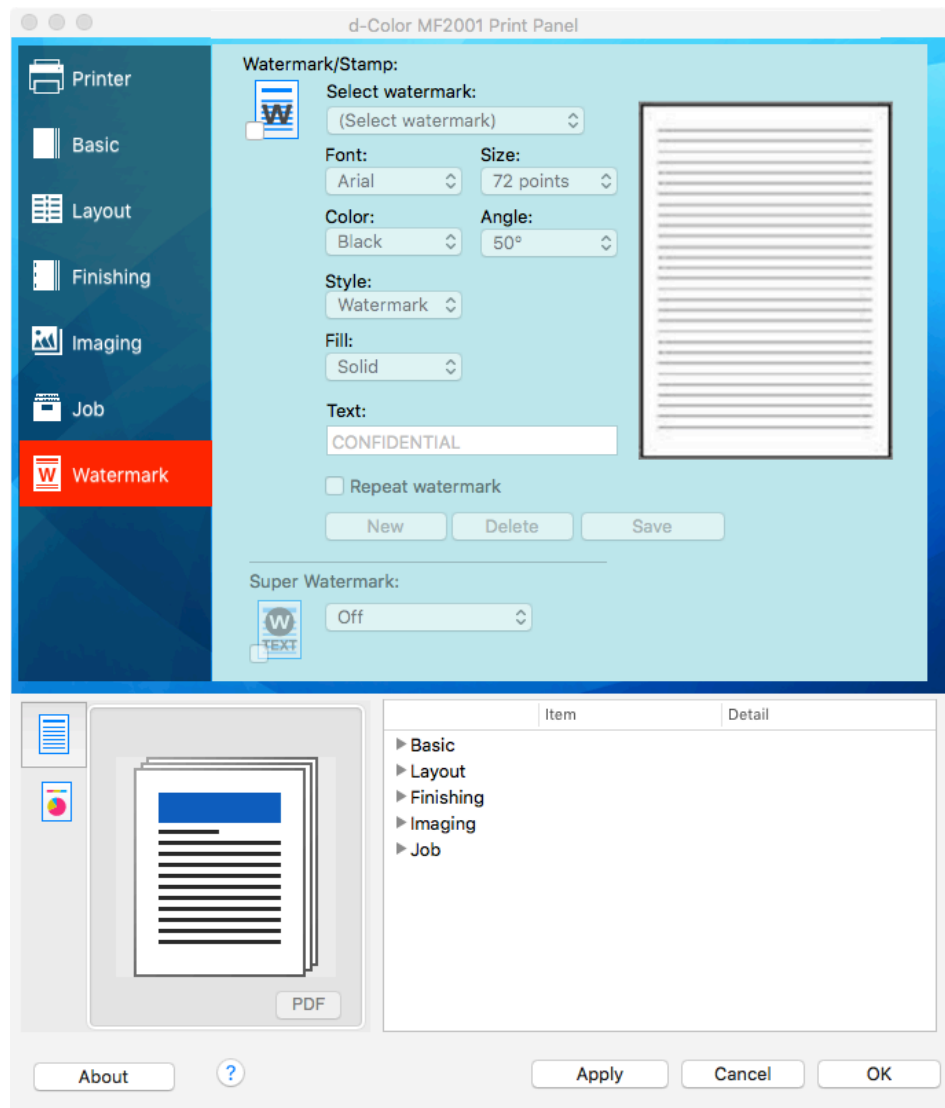
Job Pane

The **Job** pane supports features for **Job settings**, **Job name**, **Job accounting**, and **User Login**.



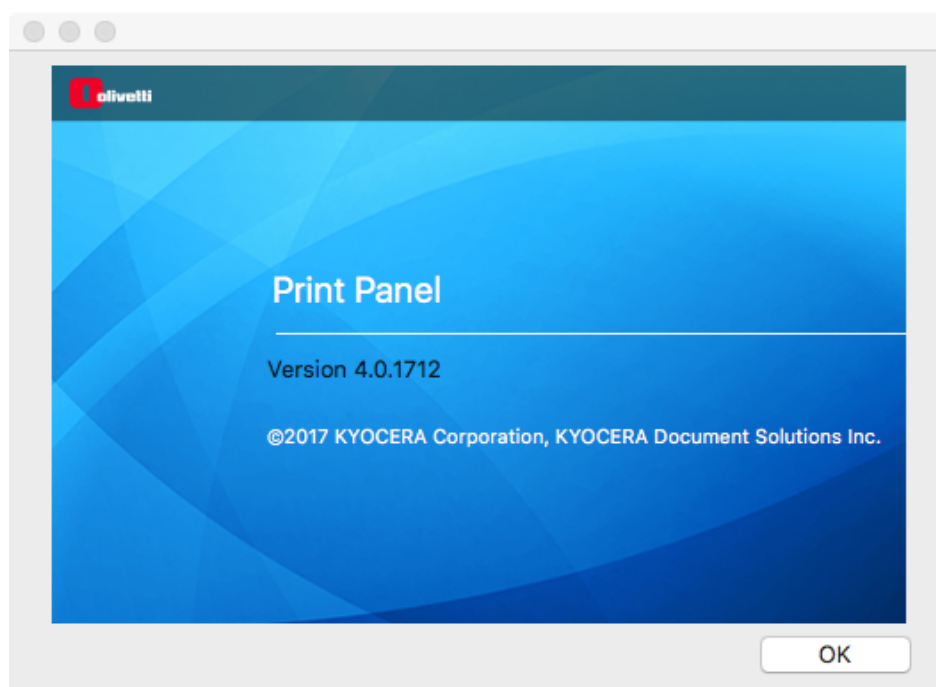
Watermark Pane

The **Watermark** pane displays settings for watermark or stamp with specific settings such as text, font, size, color, angle, style, fill, and repeat.



About Dialog

The **About** dialog can be displayed by clicking the **About** button on the left bottom corner of the **Print Panel** application. It displays version and copyright information of the **Print Panel** application.



Supported Print Features

The following table lists all the print features supported by the driver. Default settings are indicated with an asterisk (*).

Color Mode (for color models only)	Color*
	Black & White
Resolution	300 DPI (for monochrome models only)
	600 DPI*

— continued

Media type	Unspecified*
	Auto media selection
	Plain
	Transparency
	Preprinted
	Labels
	Bond
	Recycled
	Vellum
	Rough
	Letterhead
	Color
	Prepunched
	Envelope
	Cardstock
	Coated
	Thick
	High quality
	Custom type 1-8
Booklet	Off*
	Left edge binding
	Right edge binding
Print side (Tri-Fold only)	Off*
	First page on inside
	First page on outside
Direction of fold (Tri-Fold only)	Off*
	Right to left / Bottom to top
	Left to right / Top to bottom

— continued

Number of sheets	Off*
	Fold every 1 sheet
	...
	Fold every 5 sheets
Staple	Off*
	Center
	Front
	Rear
Sheets per group	Off*
	Staple every 2 sheets
	...
	Staple every 65 sheets (70 for JA models)
Punch method	Off*
	2 holes (US)
	2 holes (EUR)
	3 holes
Separation	Off*
	Offset jobs
Job settings	Printer Settings*
	Collate
	None
	Quick copy
	Proof and hold
	Job storage
	Private Print
	Custom box
Job accounting	(By default, this feature is not enabled)
	Account ID

— continued

User Login	(By default, this feature is not enabled)
	Use Specific Name
	Prompt for Name
Watermark	(By default, this feature is not enabled)
	Watermark/Stamp

5 PDF Comparison with KPDL

In the following table, "X" indicates that the feature is fully supported by the driver and "O" indicates a limited feature. Actual selections vary by device model.

Mac 4.0 Drivers	PDF Driver	KPDL Driver
Basic Features		
Source	X	X
Border line		X
Paper size	X	X
Custom print size		Min: Height = 5.85 in./148.6 mm Width = 3.85 in./97.8 mm Max (A3/Ledger models): Height = 48 in./1219.2 mm Width = 11.69 in./297 mm Max (A4/Letter models): Height = 14 in./355.6 mm Width = 8.5 in./215.9 mm
Pages per sheet	O (1, 2, 4)	X
Duplex	X	X
Collate	X	X
Scale to fit	X	X
Cover page (System Provided)	X	X
Destination		X
Media type	X	X
Banner print		X
Layout Features		
Booklet	X	X

— continued

Mac 4.0 Drivers	PDF Driver	KPD L Driver
Booklet fold		X
Finishing Features		
Offset jobs	X	X
Rotate copies		X
Tri-Fold/Bi-Fold	X	X
Print side	X	X
Direction of fold	X	X
Number of sheets	X	X
Staple	X	X
Sheets per group		X
Punch method	X	X
Finishing edge		X
Rotate 180°		X
Imaging Features		
Color mode	X	X
Gloss mode		X
Resolution	X	X
Color reproduction		X
Print grays with black toner		X
Halftone screen		X
EcoPrint		X
Color conversion		X
Trapping		X
KIR		X
CIE Optimization		X
Composite Overprint		X
Adjustment Features		

— continued

Mac 4.0 Drivers	PDF Driver	KPDL Driver
Monochrome adjustment (Lightness, Contrast)		X
Color adjustment (HSL)		X
Color adjustment (Color Balance)		X
Publishing Features		
Cover mode		X
Transparency interleaving		X
Page insert		X
Job Features		
Job name	X	X
Overwrite job name	X	X
Job settings	X	X
Job email notification		X
Job Accounting Features		
Account ID	X	X
User Login Features		
Use specific name	X	X
Prompt for name	X	X
Watermark Features		
Super watermark		X
Watermark	X	X
Stamp	X	X
Installable Options		
Paper feeder	X	X
Duplex unit		X
Document finisher	X	X
Mailbox		X

— continued

Mac 4.0 Drivers	PDF Driver	KPDL Driver
Multi tray		X
Punch unit	X	X
Folding unit	X	X
Job separator		X
Optional disk	X	X
Memory		X
Fonts		
System fonts	X	X
Device fonts		

